

PART LIST

Part No.	Description	Size No.	Q'ty	Part No.	Description	Size No.	Q'ty
1	Base		1	54	Fuse Seat	10x38-1P	2
2	Hex. Cap Bolt	M8x20	12	55	Fuse Seat	ASK2S/(5X20-1P)	3
3	Spring Washer	M8	12	55A	Fuse Seat (Not shown, Non CE)	6X30-1P	3
4	Washer	M8	12	56	Transformer	CE-250VA	1
5	Supporter		1	57	Relay PC Board	M1-RLY	1
6	Set Screw	M6x6	2	58	Connector PC Board	WT-M3-TL	1
7	Hex. Socket Cap Screw	M6x12	2	59	Dual Terminal Connector	ASL-TD-015H	10
7-1	Spring Washer	M6	2	60	Fuse Seat	10x38-1P	3
8	Fixing Bracket		3	61	Ground Terminal Connector	AVK10T	1
8-1	Fixing Bracket (RF)		1	61A	Ground Terminal Connector (Not shown, Non CE)	HT-4E	1
8-2	Fixing Bracket		2	62	Terminal Connector	AVK10	3
9	Nut	M8	12	62A	Terminal Connector (Not shown, Not CE)	HT-10	3
10	Spring Washer	M8	12	63	Grounding Plate	G-8P	1
11	Washer	M8	12	64	Overload Contactor	ABB-TA25DU 7.5~11A	1
12	Coolant Tray (L)		1	64A	Overload Contactor (Not shown, Non CE)	NTH-8~11A	1
12-1	Coolant Tray (R)		1	65	Overload Connector	ABB-TA25DU 2.2~3.1A	1
13	Hex. Cap Bolt	M8x20	12	65A	Overload Relay (Not shown, Not CE)	NTH-1.8~2.5A	1
14	Chip Drawer		1	67	Electric Box Cover		1
15	Side Coolant Tray		1	68	Power Switch (Upper)	YMXN6	1
16	Washer	M8	2	69	Washer	M6	1
17	Spring Washer	M8	2	70	Spring Washer	M6	1
18	Hex. Cap Bolt	M8x16	2	71	Hex. Socket Cap Screw	M6x30	1
19	Coolant Pump		1	72	Hinges	Ø8x50	2
20	Hex. Cap Bolt	M6x12	2	73	Main PC Board	WT-M1	1
21	Washer	M6	2	74	Control Panel		1
22	Pump Plate		1	74-1	Control PCB		1
23	Button Head Socket Screw	M6x12	2	75	Counter		1
24	Plate		1	76	Button Head Socket Screw	M5x8	10
25	Button Head Socket Screw	M6x8	4	77	Key Lock Power Switch		1
37	Hydraulic Unit		1	78	Cutting Feed Rate		1
38	Hex. Cap Bolt	M8x16	2	79	Cycle Start Switch		1
39	Front Plate		1	80	Emergency Stop Button		1
40	Button Head Socket Screw	M6x8	4	81	Stroke Panel		1
41	Hex. Cap Bolt	M16x60	4	81-1	Bow Height PCB		1
42	Nut	M16	4	82	Stroke Height Switch		1
43	Rear Plate		1	83	Button Head Socket Screw	M5x8	4
44	Button Head Socket Screw	M6x8	4	84	Plate		1
45	Vise Pressure Adjusting Valve		1	85	Handle		2
46	Electrical Box		1	86	Button Head Socket Screw	M5x8	4
47	Washer	M6	4	87	Control Box		1
48	Hex. Socket Cap Screw	M6x16	4	88	Cover		1
49	Electrical Plate		1	88-1	Round Head Screw	M6x8	6
50	Hex. Socket Cap Screw	M6x12	4	89	Control Box Bracket		1
51	Power Switch (Seat)	XA323B/B-40A	1	89-1	Button Head Socket Screw	M6x8	4
52	Contactor	A9-40-00 (COIL: AC24V)	2	90	Swiveling Bracket		1
52A	Contactor (Not shown, Non CE)	C09D10A7 (COIL: AC24V)	2	90-1	Hex. Socket Cap Screw	M6x16	4
53	Contactor	A12-30-10 (COIL: AC24V)	1	91	Hex. Cap Bolt	M8x16	4
53A	Contactor (Not shown, Non CE)	C12D10A7 (COIL: AC24V)	1	91-1	Spring Washer	M8	4

PART LIST

Part No.	Description	Size No.	Q'ty	Part No.	Description	Size No.	Q'ty
92	Handle	M8x30	1	144	Hex. Socket Cap Screw	M8x20	8
93	Swiveling Base		1	145	Hex. Cap Bolt	M5X15	1
94	Set Screw	M8x20	2	146	Wire Connector		1
95	Nut	M8	2	147	Swiveling		1
96	Connect Base		1	148	Shaft		1
96-1	Spring Washer	M8	4	149	Taper Bearing	30312	2
96-2	Hex. Cap Bolt	M8x16	4	150	Upper Cover		1
98	Plate		1	151	Set Screw	M6x25	1
99	Button Head Socket Screw	M5x8	4	152	Hex. Socket Cap Screw	M8x20	8
100	Cam Shaft		1	153	Tighten Plate		1
101	Bearing	6000ZZ	1	154	O Ring	ØP60	2
102	Spring Washer	M10	1	155	Hex. Cap Bolt	M20x65	1
103	Nut	M10	1	156	Nut	M20	1
104	Cam Seat		1	157	Hex. Cap Bolt	M10x60	1
105	Button Head Socket Screw	M8x25	2	158	Nut	M10	1
106	C Ring	S16	1	159	Screw Holder		2
107	Hex. Socket Cap Screw	M10x40	1	160	Spring Bracket		1
108	Extend Spring		1	161	Washer	1/2"	2
109	Nut	M10	1	162	Nut	1/2"	2
110	Joint Plate		1	163	Spring Washer	M8	4
111	Set Bolt		1	164	Hex. Socket Cap Screw	M8x25	4
112	Connect Unit		1	165	Cutting Bench		1
113	Hex. Socket Cap Screw	M10x50	1	166	Pin	Ø8x20	2
114	Handle Level		1	167	Hex. Socket Cap Screw	M10x60	2
115	Nut	M12	1	168	Cutting Plate		1
116	Handle		1	169	Hex. Socket Cap Screw	M10x55	2
117	Angle Setting		1	170	Hex. Socket Cap Screw	M8x20	2
118	Hex. Socket Cap Screw	M8x20	2	171	Vise Jaw-Left		1
119	Set Block		1	172	Vise jaw-Right		1
120	Button Head Socket Screw	M6x8	2	173	Hex. Socket Cap Screw	M10x30	8
121	Cover		1	174	Hex. Socket Cap Screw	M8x20	4
121-1	Hex. Socket Cap Screw	M4x6	2	175	Vise Plate		1
121-2	Magnifier Holder		1	176	Hex. Socket Cap Screw	M8x20	1
121-3	Angle Magnifier		1	177	Hex. Socket Cap Screw	M12x30	2
122	Hex. Socket Cap Screw	M10x40	1	178	Vise Jaw		1
123	Washer		1	179	Vise Slide		1
124	Angle Wheel		1	180	Cylinder		1
125	Wire Connector		1	181	Hex. Socket Cap Screw	M12x30	2
126	Hex. Cap Bolt	M5x15	1	182	Hex. Socket Cap Screw	M10x40	6
127	Bush		1	182-1	Spring Washer	M10	6
128	Steel Wire	Ø1.2	1	183-1	Rod Seat		1
129	Extend Spring		1	183-2	Oil Less Bush	45x55x40	2
130	Bed Plate		2	183-3	Rod		1
131	Pin	Ø8x20	4	183-4	Vise Table		1
132	Hex. Socket Cap Screw	M12x130	6	183-5	Spring Pin	M8x20	2
133	Set Screw	M12x25	4	183-6	Position Plate		1
134	Bed		1	183-7	Hex. Socket Cap Screw	M12x35	4
135	Nut	M10	1	184	Bench Supporter		1
136	Hex. Socket Cap Screw	M10x40	1	185	Nut	M10	1
137	Seating Block		2	186	Spring Washer	M10	2
138	Hex. Socket Cap Screw	M10x35	4	189	Bearing	6200ZZ	1
139	Hex. Socket Cap Screw	M10x20	5	190	Spring Washer	M10	2
140	Spring Washer	M10	5	191	Hex. Socket Cap Screw	M10x30	1
141	Pin	Ø8x20	2	192	Handle		1
142	Angle Plate		1	193	Handle Rod		1
143	Lower Cover		1	194	Nut	M10	1

PART LIST

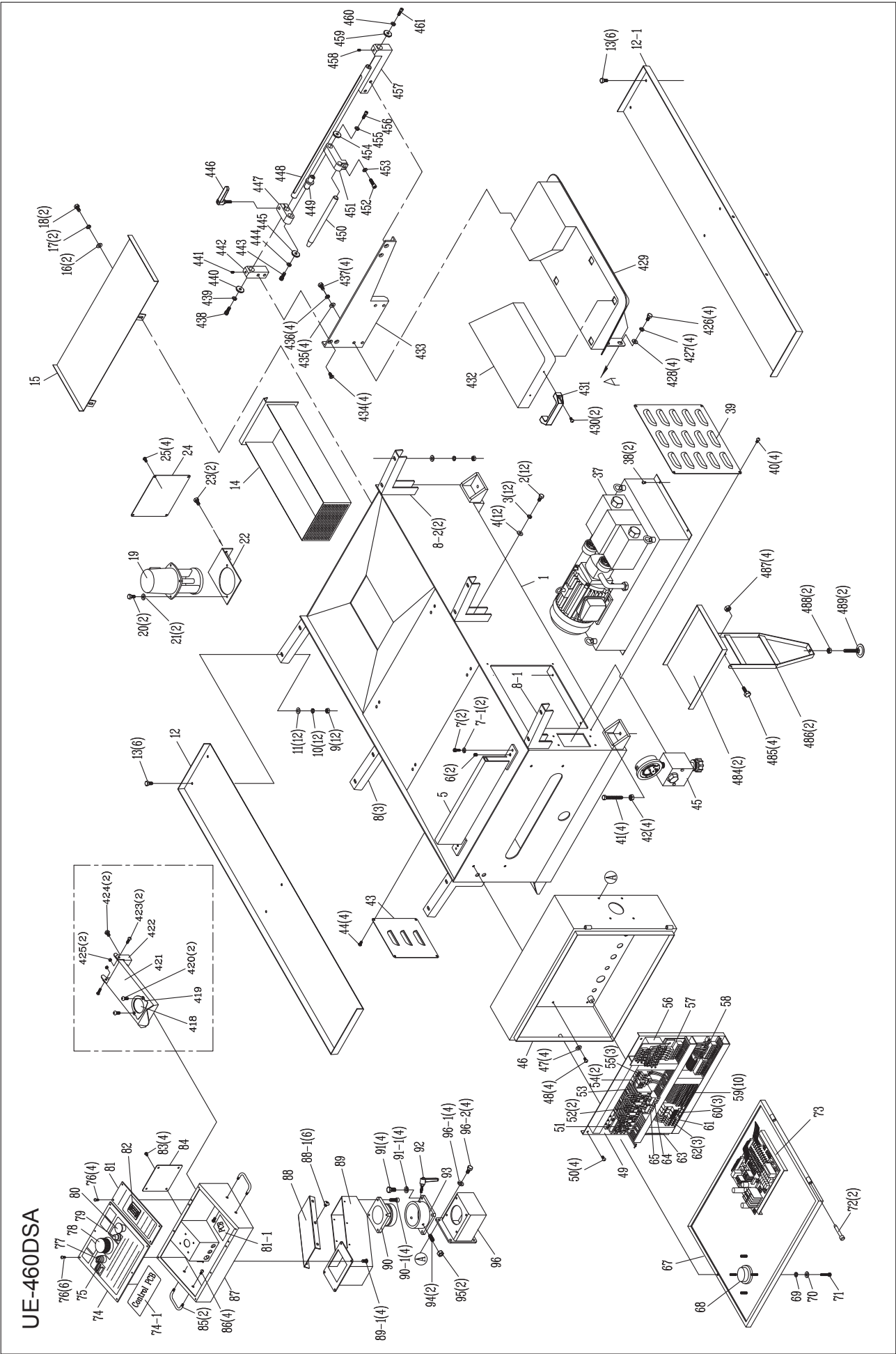
Part No.	Description	Size No.	Q'ty	Part No.	Description	Size No.	Q'ty
195	Adjusting Part		1	247	Spring Washer	M10	4
196	Set Screw	M8x8	2	248	Washer	M10	4
197	C Ring	S17	2	249	Set Screw	M8x16	6
198	Shaft		1	250	Adjustable Bracket-Left		1
199	Key	5x5x20	1	251	Lock Handle	M12x50	2
200	Cam		1	252	Lock Block		2
201	Hex. Socket Cap Screw	M6x16	1	253	Round Head Screw	M5x8	5
202	Hex. Cap Bolt	M6x16	1	254	Steel Plate		1
203	Nut	M6	1	255	Hex. Socket Cap Screw	M10x20	4
204	Bolt		1	256	Set Screw	M10x16	4
205	Hex. Socket Cap Screw	M8x40	2	257	Set Plate		1
206	Spring Washer	M8	2	258	Tension Spring		2
207	Washer	M8	2	259	Hex. Socket Cap Screw	M10x25	3
208	Set Block		1	260	Spring Washer	M10	3
209	Set Screw	M8x8	2	261	Spring Bracket		1
210	Set Block		1	262	Washer	1/2"	4
211	Copper Parts		2	263	Nut	1/2"	4
212	Vise Guide		1	264	Brush		1
213	Hex. Socket Cap Screw	M12x35	4	264-1	Nut	M6	1
214	Plate		1	264-2	Spring Washer	M6	1
215	Spring Washer	M8	2	264-3	Washer	M6	1
216	Hex. Cap Bolt	M8x20	2	265	Oil Less Bush	1212	2
217	Retrieval Vise		1	266	Set Bush		1
218	Set Handle	M8x30	1	267	Brush Cover		1
219	Round Head Screw	M6x8	2	268	Brush Bracket		1
220	Handle		1	268-1	Hex. Cap Bolt	M8x20	2
221	Handle Seat		1	268-2	Spring Washer	M8	2
222	Pin	Ø6x28	1	268-3	Washer	M8	2
223	Screw Sleeve		1	269	Wing Screw	M6x10	1
224	Set Handle	M12x45	1	270	Spring Washer	M6	1
225	Rod		1	271	Hex. Socket Cap Screw	M6x20	1
226	Set Screw	M8x8	1	272	Brush Shaft		1
227	Sleeve Rod		1	273	Nut	M20	1
228	Shaft		1	274	Brush Rod		1
229-1	Mobile Fence		1	274-1	Key	4x15	4
230	Set Screw	M8x8	1	275	Universal Joint		2
231	Blade Cover		1	275-1	Set Screw	M5x6	8
231-1	Button Head Socket Screw	M6x8	2	276	Plastic Cover		2
235	Blade Guide-Right		1	277	Safety Cover		1
236	Pin	Ø4x12	1	277-1	Button Head Socket Screw	M5x8	2
237	Adjustable Bracket-Right		1	278	Brush Bracket		1
237-1	Laser Device	(Optional)	1	278-1	Spring Washer	M8	2
237-2	Laser Bracket		1	278-2	Hex. Socket Cap Screw	M8x20	2
237-3	Screw	M6	1	279	Nut	M6	8
237-4	Hex. Socket Cap Screw	M5x15	1	280	Brush Motor		1
237-5	Spring Washer	M5	1	281	Hex. Socket Cap Screw	M6x90	4
237-6	Washer	M5	1	282	Set Plate		1
238	Button Head Socket Screw	M6x16	4	283	Spring Washer	M6	2
239	Fixed Bracket		2	284	Hex. Socket Cap Screw	M6x12	2
240	Pin	Ø8x70	2	285	Sensor		1
241	Button Head Socket Screw	M8x30	4	286	Round Head Screw	M3x20	2
242	Free Block		2	287	Nut	M3	2
243	Pin	Ø4x12	1	288	Saw Bow		1
244	Knob	M5x8	1	289	Spring Washer	M12	4
245	Blade Guide-Left		1	290	Hex. Cap Bolt	M12x45	4
246	Hex. Socket Cap Screw	M10x35	4	291	Lock Pin		1

PART LIST

Part No.	Description	Size No.	Q'ty	Part No.	Description	Size No.	Q'ty
292	Drive Wheel		1	347	Bearing	51203	1
293	Washer		1	348	Bolt Sleeve		1
294	Flat Head Hex. Soc. Screw	M12x25	1	349	Key	5x5x30	1
295	Hex. Socket Cap Screw	M12x70	4	350	Set Screw	M8x10	1
296	Washer		1	351	Handle Wheel		1
297	Upper Shaft		1	352	Handle		2
298	Holder		1	353	Limit Switch		1
299	Nut	M20xP1.5	1	354	Hex. Socket Cap Screw	M4x35	2
300	Saw Bow Cylinder		1	355	Washer		1
301	C Ring	S20	4	356	C Ring	S45	2
302	Hex. Socket Cap Screw	M8x20	2	357	Shaft Device		1
303	Cylinder Seat		1	358	Slide		1
304	Lower Shaft		1	359	Shaft	Ø16x90	1
305	Block		1	360	Set Screw	M12x25	1
306	Spring Washer	M8	2	361	Slide Guide		2
307	Button Head Socket Screw	M8x40	2	362	Slide Plate		2
308	Round Shaft		2	363	Spring Washer	M10	6
309	Sidle Wheel		2	364	Hex. Socket Cap Screw	M10x60	6
310	Bearing	6005	2	365	Blade Cover		1
311	C Ring	R42	2	366	Button Head Socket Screw	M6x8	4
312	Washer	M10	2	367	Limit Switch		1
313	Spring Washer	M10	2	368	Hex. Socket Cap Screw	M4x30	2
314	Hex. Socket Cap Screw	M12x60	2	369	Button Head Socket Screw	M5x8	2
315	Steel Plate Holder		2	370	Indicator Seating		1
316	Washer	M10	4	371	Oil Less Bush	4040	2
317	Spring Washer	M10	4	372	Set Block		2
318	Hex. Socket Cap Screw	M10x30	4	373	Hex. Cap Bolt	M10x20	1
319	Taper Bearing	32009	2	374	Nut		1
320	Idle Wheel		1	375	Spring Washer		1
321	Anti-Dust Cover	32009AV	2	376	Washer		1
322	Star Washer	AW09	1	377	Sensor Bracket		1
323	Nut	AN09	1	378	Sensor		1
324	Cover Switch		1	379	Round Head Screw	M4x10	2
325	Hex. Socket Cap Screw	M4x30	2	380	Cover		1
326	Nut	M8	2	381	Button Head Socket Screw	M5x8	4
327	Bracket		1	382	Gear Box		1
328	Upper Bush		1	383	Key	12x8x50	1
328-1	Lower Bush		1	384	Motor		1
328-2	Holding Bracket Bush		1	385	Hex. Cap Bolt	M10x35	4
329	Round head Socket Screw	M8x25	4	386	Spring Washer	M10	4
330	Bracket		1	387	Washer	M10	4
331	Holding Bracket		1	388	Key	10x8x40	1
332	Spring		1	389	Pulley Cover		1
333	Safe Locker		1	390	Belt	1922V504	1
334	Set Screw	M4x12	2	391	Variable Speed Adjustable		1
335	Hex. Cap Bolt	M8x20	2	392	Input Pulley		1
336	Spring Washer	M8	2	393	Hex. Socket Cap Screw	M8x65	1
337	Hex. Cap Bolt	M8x20	1	394	Cover		1
338	Disc Washer Seat		1	394-1	Cover		1
339	Spring Pin	M5x12	2	394-2	Button Head Socket Screw	M5x8	2
340	Disc Washer		8	395	Button Head Socket Screw	M5x8	8
341	Slide Bolt		1	396	Long Bearing Shaft		4
342	Hex. Cap Bolt	M8x60	1	397	Bearing	6201	8
343	Nut	M8	1	398	Bearing Bush (long)		2
344	Plate		1	399	Bearing Bush (short)		2
345	Bushing		1	400	Spring Washer	M10	4
346	Blade Tension Gauge		1	401	Nut	M10	4

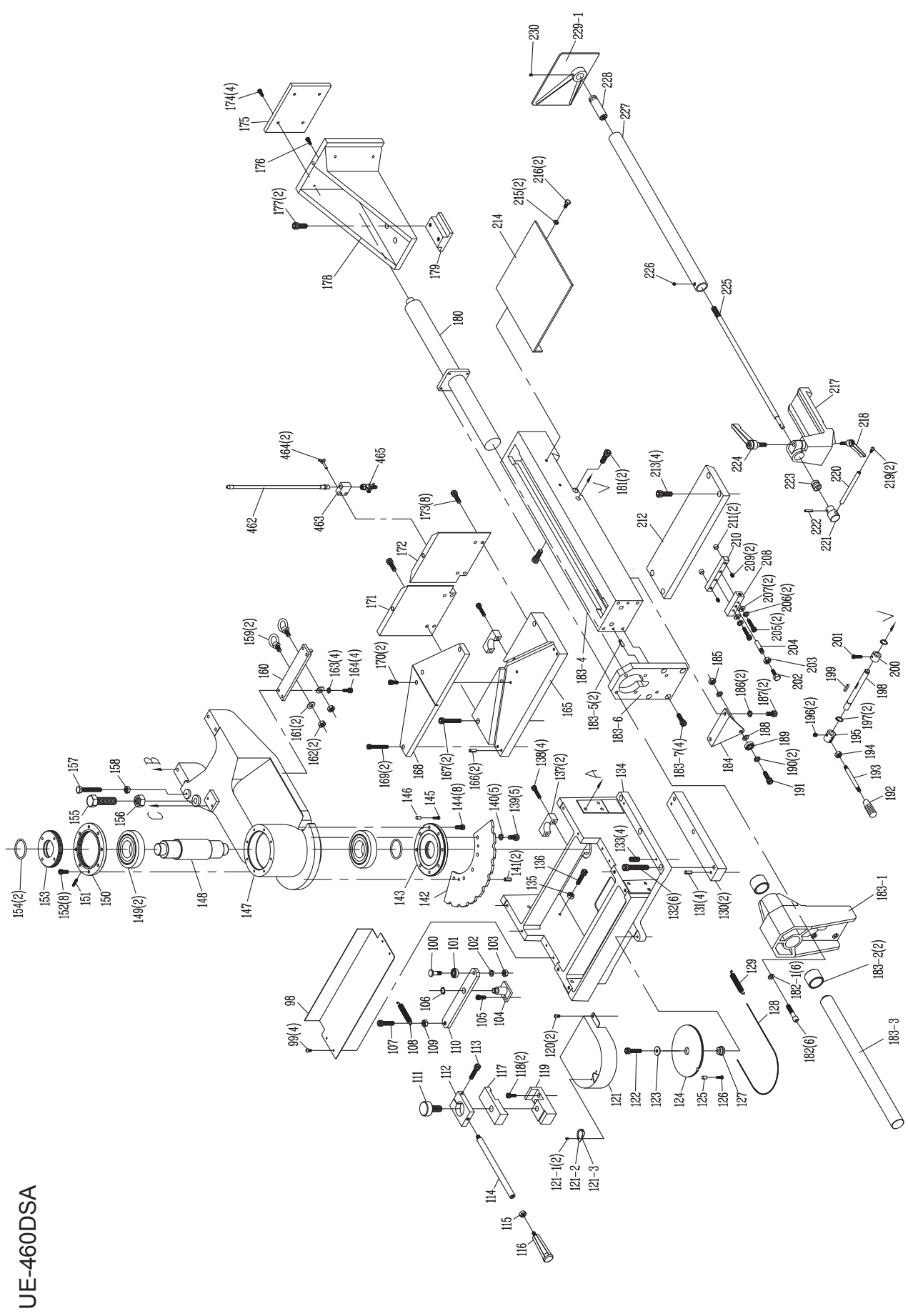
PART LIST

Part No.	Description	Size No.	Q'ty	Part No.	Description	Size No.	Q'ty
402	Hex. Socket Cap Screw	M6x20L	4	458	Set Screw	5/16"x5/16"L	1
403	Adjusting Knob		2	459	Washer		1
404	Spring		2	460	Spring Washer	3/8"	1
405	Shaft		2	461	Hex. Socket Cap Screw	3/8"x1"L	1
406	Hex. Socket Cap Screw	M8x40L	2	462	Hose		1
407	Front Bearing Seat		1	463	Pipe Fitting Seat		1
408	Bearing	6200	4	464	Wing Screw	M6x30L	2
409	Bearing Bracket		2	465	Coolant Switch	1/4"PTx1/4"	1
410	Bush		2	466	Hex. Socket Cap Screw	M10x150L	4
411	Shaft		4	467	Spring Washer	M10	4
412	Carbide Guide (Left front)		1	468	Blade Tension Cylinder		1
413	Carbide Guide (Left back)		1	469	Tension Slider		1
414	Spring Pin	D5x12L	4	470	Limit Switch for Tension		1
415	Rear Bearing Seat		1	471	Hex. Socket Cap Screw	M12x25L	2
416	Carbide Guide (Right front)		1	472	Slide Plate		2
417	Carbide Guide (Right back)		1	473	Idle Wheel Washer		1
418	Bow Height Magnifier		1	474	Spring Washer	M12	1
419	Magnifier Bracket		1	475	Hex. Socket Cap Screw	M12x25L	1
420	Round Head Screw	M4x6L	2	476	Hex. Socket Cap Screw	M8x20L	6
421	Height Scale Cover		1	477	Spring Washer	M8	6
422	Cover Bracket		1	478	Hex. Cap Bolt	M12x70L	3
423	Round Head Screw	M4x12L	2	479	Spring Washer	M12	3
424	Big Round Head Screw	M4x6L	2	480	Adjusting Screw		3
425	Nut	M4	2	481	Nut	M22x2.5	3
426	Hex. Cap Bolt	M12x25L	4	482	Slider Seat		1
427	Spring Washer	M12	4	483	Idle Wheel Shaft		1
428	Washer	M12	4	484	Movable Coolant Tray		2
429	Outlet Support		1	485	Hex. Cap Bolt	M6x12L	4
430	Big Round Head Screw	M6x12L	2	486	Tray Bracket		2
431	Handle		1	487	Nut	M6	4
432	Movable Support		1	488	Nut	1/2"	2
433	Side Support Plate		1	489	Adjusting Screw		2
434	Flat Head Screw	5/16"x3/4"L	4	490	Cock	1/4x1/4	1
435	Washer	M10	4	491	Spring Washer	M12	1
436	Spring Washer	M10	4	492	Fixing Bracket		1
437	Hex. Cap Bolt	M10x25L	4	493	Fitting	1/4x1/4	1
438	Hex. Socket Cap Screw	3/8"x1"L	1	494	Big Round Head Screw	M6x8L	2
439	Spring Washer	3/8"	1	495	Fitting	1/4x1/4	1
440	Washer		1	496	Hose	1/4"x185mm	1
441	Set Screw	5/16"x5/16"L	1	497	Hose	1/4"x2215mm	1
442	Right Positioning		1	498	Cock	1/4x1/4	1
443	Hex. Socket Cap Screw	3/8"x1"L	1	499	Nozzle Set		1
444	Spring Washer	3/8"	1	500	Nozzle	1/4"x18"L	1
445	Washer		1	501	Y Fit		1
446	Lock Handle		1	502	Hose	1/4"x2700mm	1
447	Length Adjusting Block		1	503	Hose	1/4"x1580mm	1
448	Length Rod		1	504	Cock	1/4x1/4	1
449	Welding Shaft		1	505	90° Fitting	1/4x1/8	1
450	Stop Bar		1	506	Fitting	3/8x1/4	1
451	Position Bracket		1	507	90° Fitting	3/8x1/4	1
452	Hex. Socket Cap Screw	3/8"x1"L	1	508	Fitting Set	3/8	1
453	Spring Washer	3/8"	1	509	90° Fitting	1/2x3/8	1
454	Washer		1	510	Coolant Pump	1/6"x150L	1
455	Spring Washer	3/8"	1	511	Hose	1/4"x1400mm	1
456	Hex. Socket Cap Screw	3/8"x1"L	1				
457	Left Positioning		1				



UE-460DSA

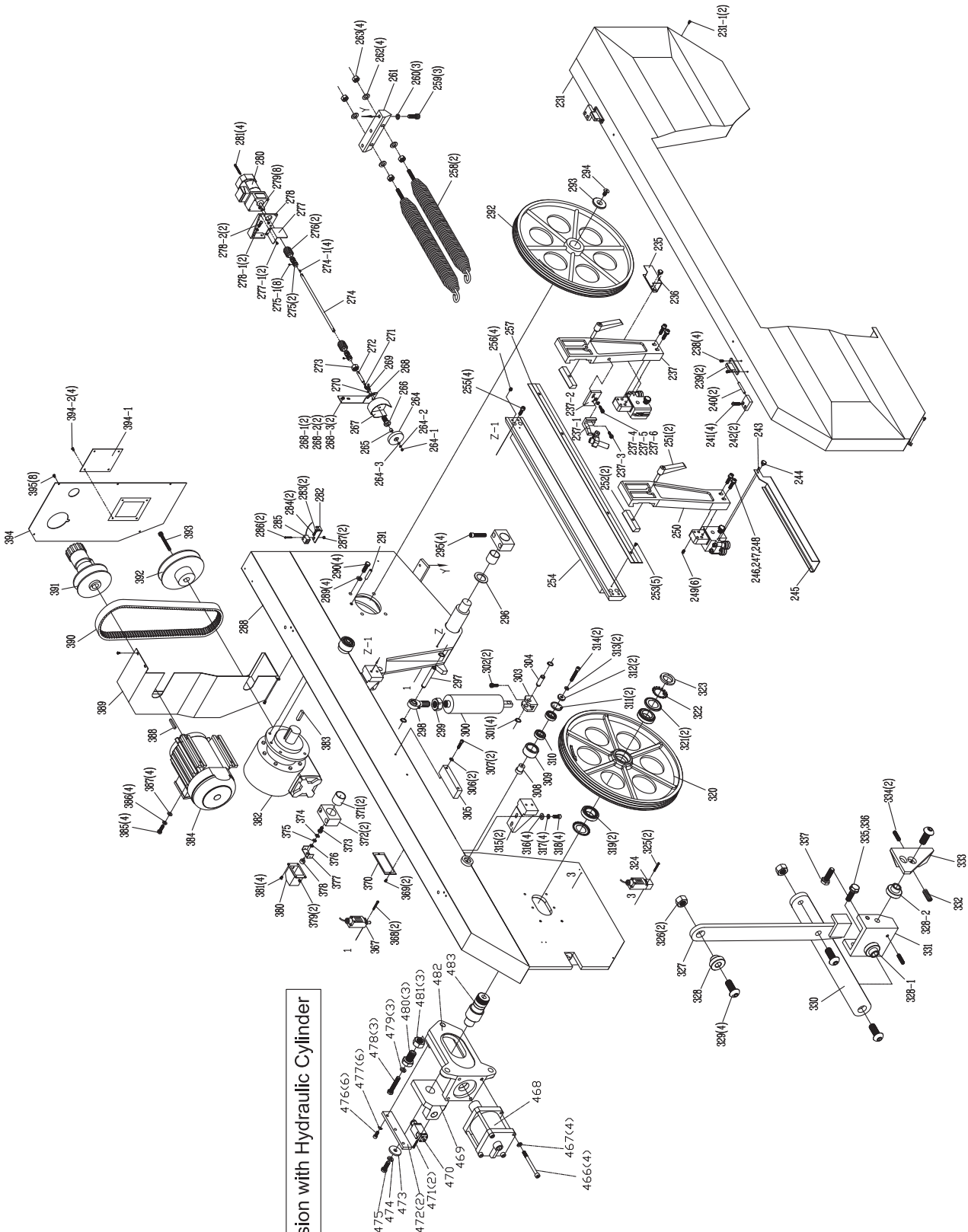
1000307-V4



UE-460DSA

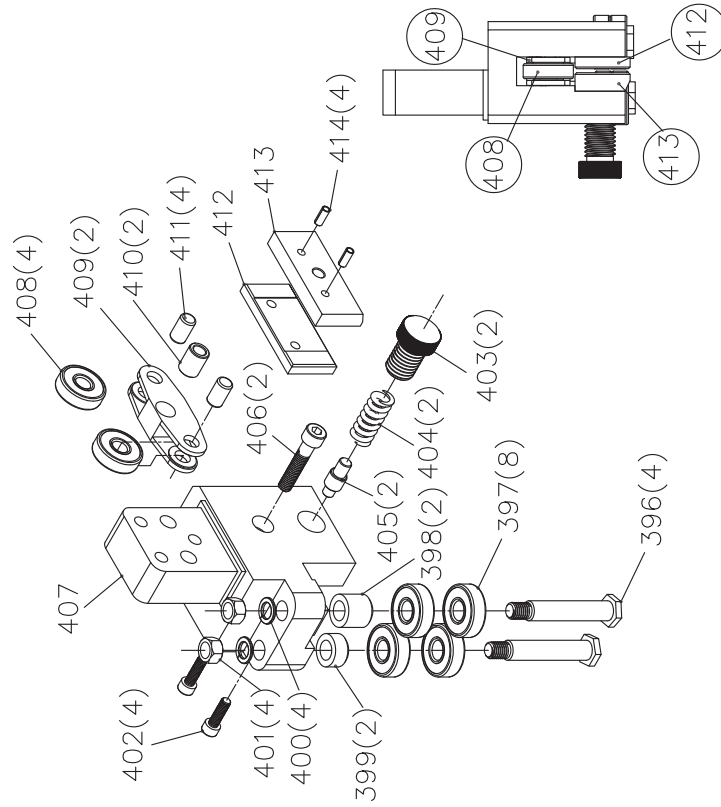
UE-460DSA

Blade Tension with Hydraulic Cylinder

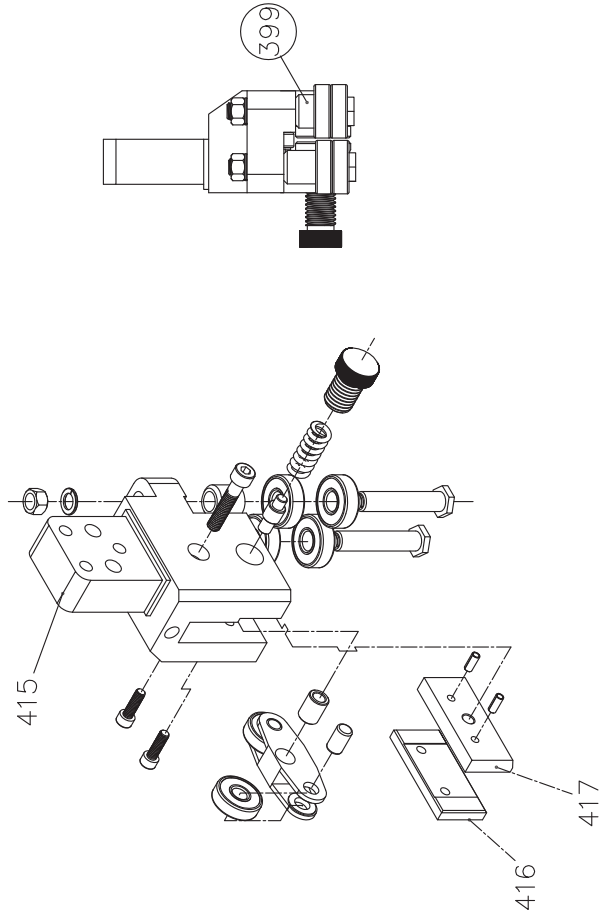


UE-460DSA

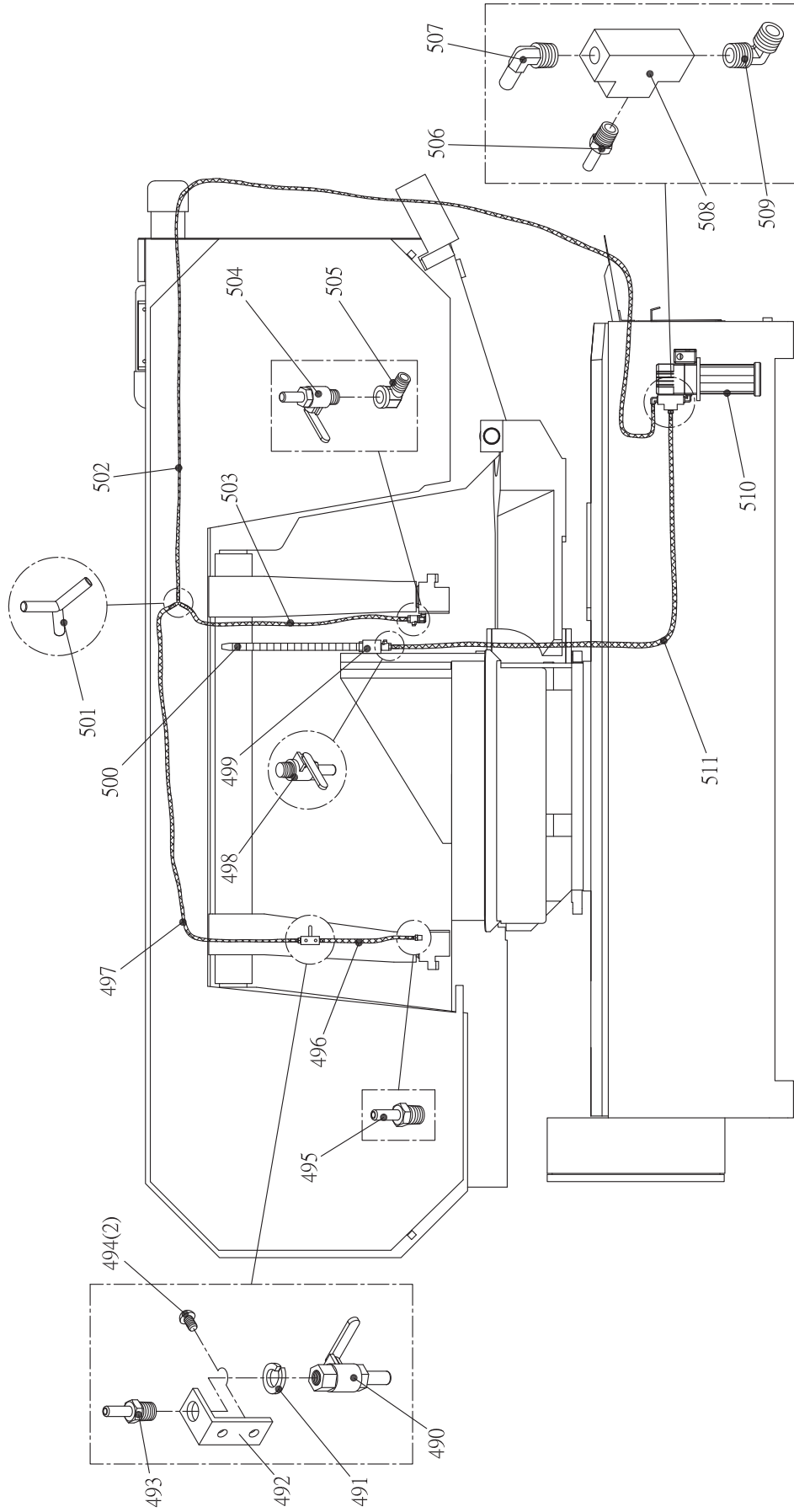
FRONT BEARING SEAT



REAR BEARING SEAT



UE-460DSA



1000622-V1